

YEAR 7 ART TERM 1 NURTURE – 'FORMAL ELEMENTS' Knowledge Organiser

LINE

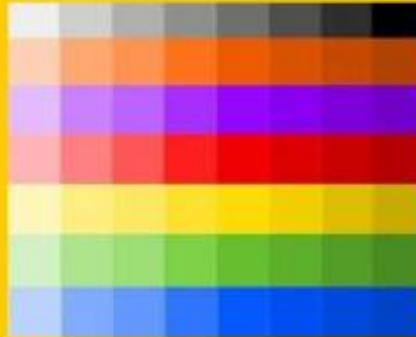
A Line is the path left by a moving point, e.g. a pencil or a brush dipped in paint. A line can take many forms, e.g. horizontal, diagonal or curved.

A Line can be used to show Contours, Movements, Feelings and Expressions.



TONE

Tone means the lightness or darkness of something. This could be a shade or how dark or light a colour appears



SHAPE & FORM

A shape is an area enclosed by a line. It could be just an outline or it could be shaded in.

Form is a three dimensional shape such as a sphere, cube or a cone.

Sculpture and 3D design are about creating forms



KEY WORDS & TERMS

Line

Tone

Shape

Form

Texture

Colour

Pattern

Shade

Light

Dark

Pressure

Natural Pattern

Manmade Pattern

Geometric Shape

Organic Shape

Actual Texture

Visual Texture

Design

3D Design

2D Design

Primary Colours

Secondary Colours

Mix

Blend

FORMAL ELEMENTS

TEXTURE

Texture is the surface quality of something, the way something feels or looks like it feels. There are two types of texture: Actual Texture and Visual Texture.

Actual Texture— really exists so you can feel it or touch it

Visual Texture— created using different marks to represent actual texture.



Actual Texture

Visual Texture

COLOUR

There are 3 Primary Colours: RED, YELLOW and BLUE.

By mixing any two Primary Colours together we get a Secondary Colour: ORANGE, GREEN and PURPLE



PATTERN

A pattern is a design that is created by repeating lines, shapes, tones or colours.

Patterns can be manmade, like a design on fabric, or natural, such as the markings on animal fur.

